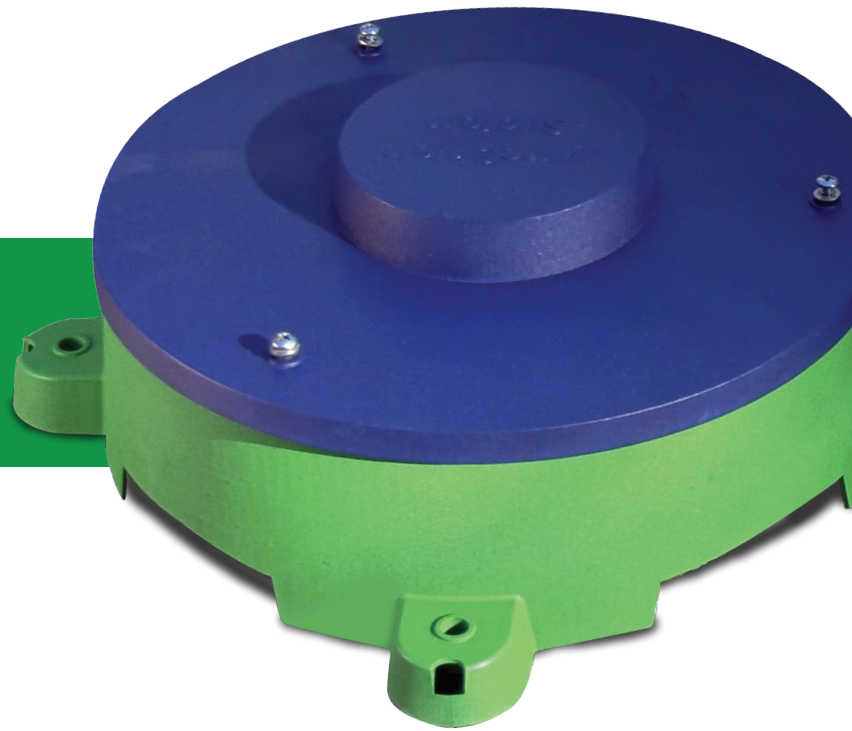


Installing the LymeShield® Station



Lymeshield Station Components

1. Main station (pellet housing and carousel)
2. Lid
3. Three Phillips head lid screws and washers
4. Three AAA batteries
5. Four concrete screws

Additional Equipment Needed

Paver (12"x12"), 3/16" concrete drill bit, 5/16" socket or driver for concrete screw installation, and a Phillips screwdriver for lid installation. (Figure 1)

Installation

1. Use the station to mark drill locations (Figure 2) and pre-drill the holes. (Figure 3) Then, use the included concrete screws to secure the station to the paver. (Figure 4) Do this at the office/warehouse location, not the customer's property.
2. Once at the property, choose a dry, flat area around the perimeter of the property that is ideally under bushes or other foliage.
3. Install the three AAA batteries on top of the carousel. (Figure 5)
4. The station will run a system check, and the carousel will return to the start position.
5. Fill the six empty chambers with pellets. One container of pellets will fill the station. Do not fill the chamber higher than station walls.
6. Once filled, place the lid, aligning the three lid screw holes with the main pellet housing, place washers, and insert screws. Do not over-tighten.
7. Installation is complete with three-months' supply of pellets.

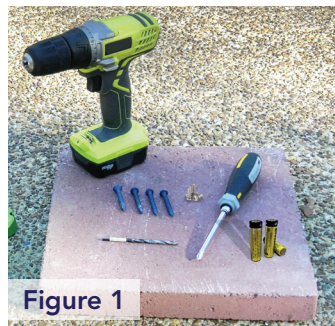


Figure 1



Figure 2



Figure 3

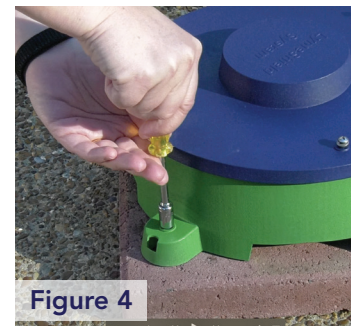


Figure 4



Figure 5



Figure 6